

KS1 SATS

In May 2017 your child will be taking their SATs (Standard Attainment Tests). I know it sounds a long way off but I thought it was worth giving you a taste of what these tests are like! They will be doing the following;

a) Spelling

b) Grammar and Punctuation

c) Two Reading Comprehensions

d) Maths – Arithmetic

e) Maths – Reasoning

*Writing and Science are teacher assessed.

I hope to have the opportunity to talk to you about these in more detail later in the year.

Mathematics (Paper 2) – Reasoning [Sample Questions]

15 A shop sells these sweets.



2p



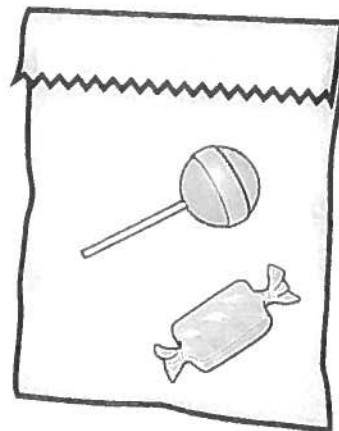
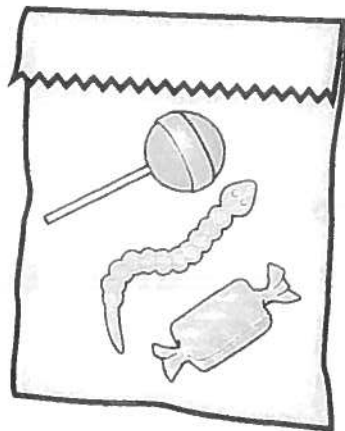
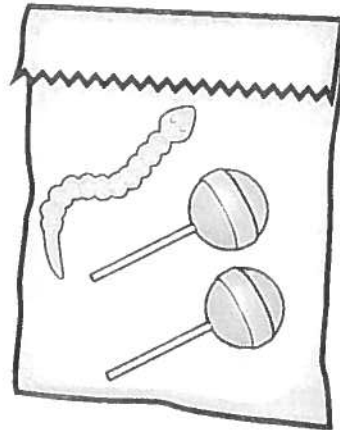
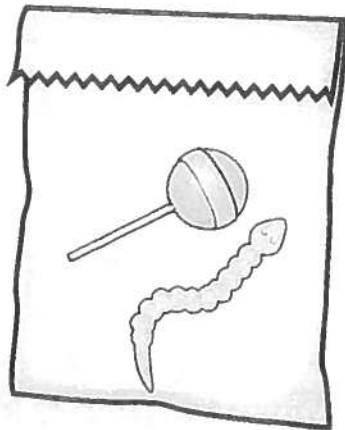
5p

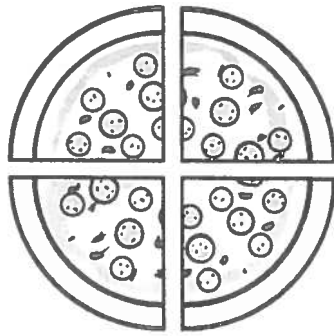


10p

Abdul spends exactly **20p** on sweets.

Tick (✓) the bag of sweets he buys.





Sita cuts a pizza into four equal slices.

She eats one slice.

What fraction of the pizza does she eat?

—



17 Sam is collecting cards.

He wants to collect **100** cards altogether.

Last week he collected **50** cards.

This week he collects **30** cards.



How many **more** cards does he need?

cards



Mathematics (Paper 1) – Arithmetic [Sample Questions]

9

$$8 + 5 + 4 = \boxed{}$$



10

$$36 + 24 = \boxed{}$$



11

$$87 - 40 =$$



12

$$50 -$$

$$= 20$$



Punctuation and Grammar [Sample Questions]

Practice questions

- a** Tick the word that completes the sentence.

We were _____ on our projects.

Tick **one**.

worked

works

working

work

- b** Write one word on the line below to complete the sentence in the **past tense**.

I _____ to Scotland during the school holidays.

1

Write the missing punctuation mark to complete the sentence below.

Can you play my favourite tune



2

Tick the correct word to complete the sentence below.

I hope _____ we will play musical chairs at the party.

Tick **one**.

when

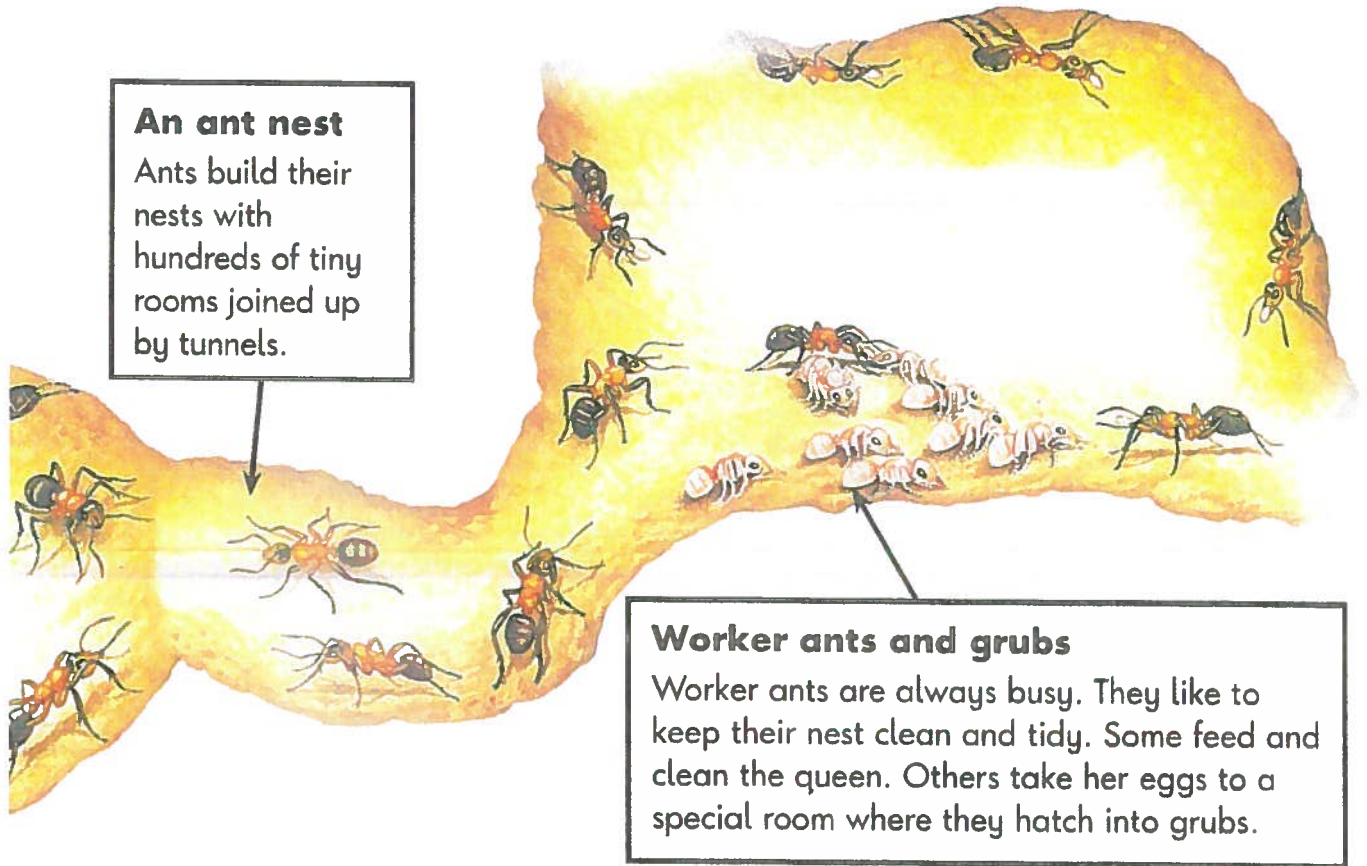
if

that

because



Reading (Paper 1) - [Sample Questions]



3 What joins the rooms in an ant nest together?

4 Give **two** jobs that the worker ants do.
1. _____
2. _____

5 What happens to the eggs in the special room?
